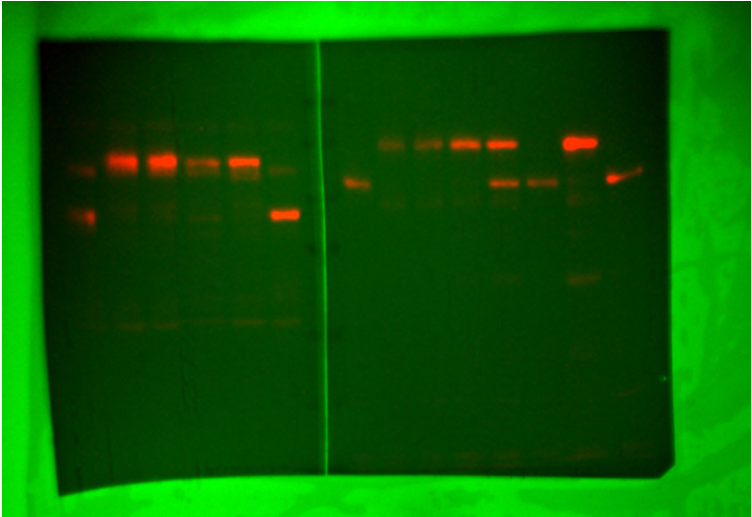
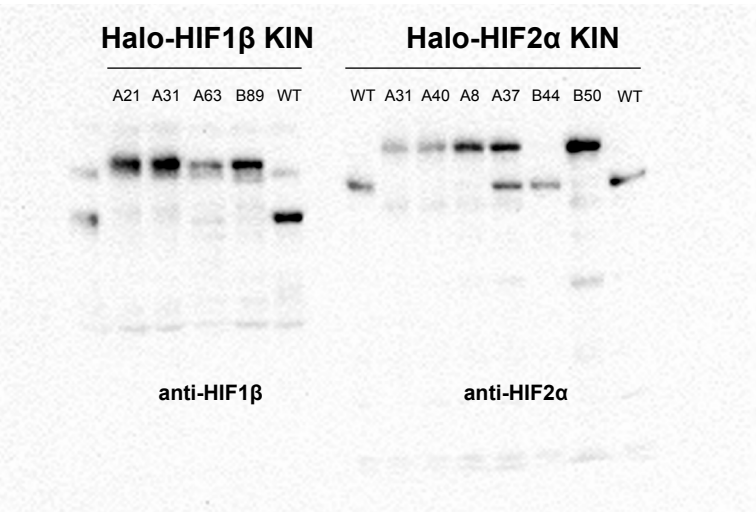


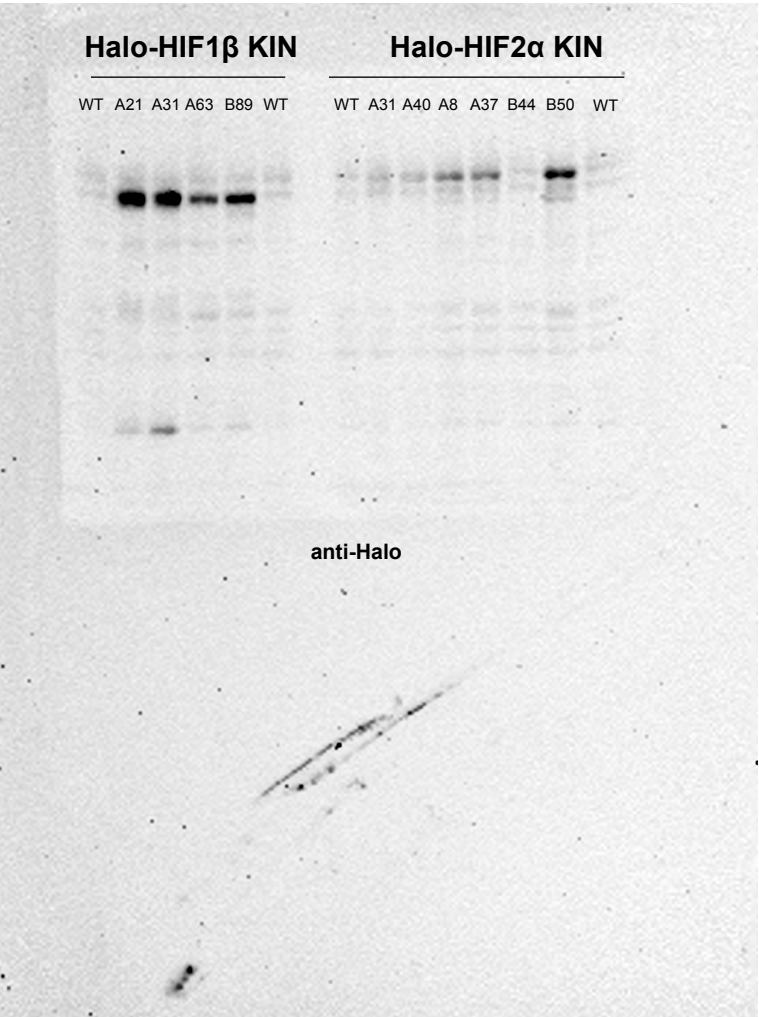
Left multi-channel blot image shows that this gel was cut in half and each was blotted with a different antibody



multichannel blot image showing anti-HIF1b and anti-HIF2a signal over the membrane

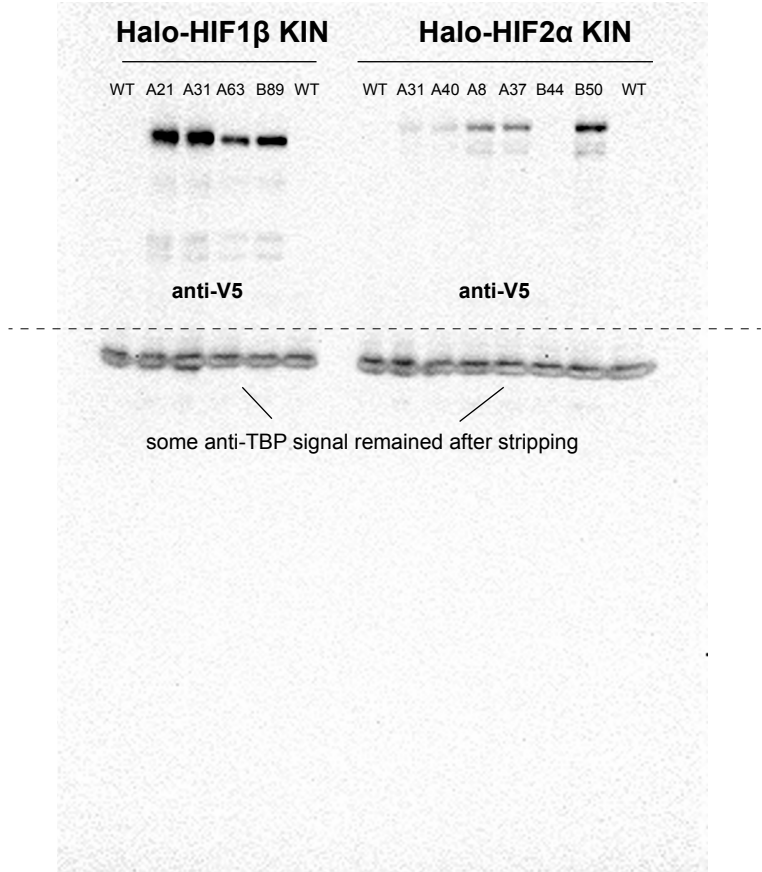


Original uncropped image for anti-HIF1b and anti-HIF2a signals

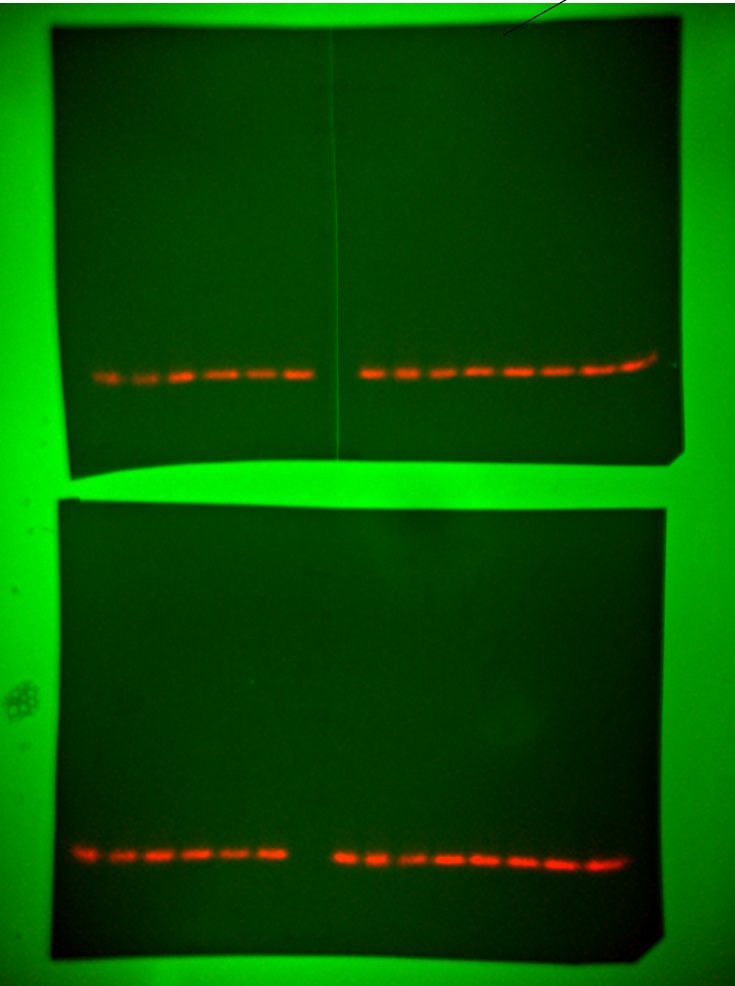


Original uncropped image for anti-Halo signals

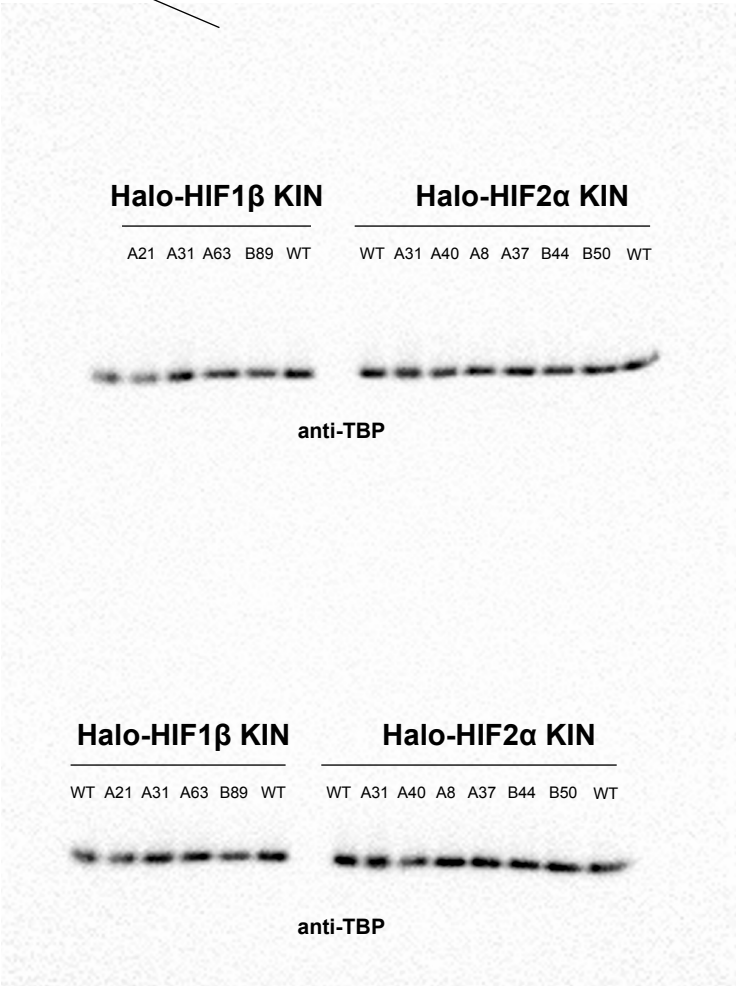
Left multi-channel blot image shows TBP loading control for the three piece of membranes



Original uncropped image for anti-V5 signals



multichannel blot image showing anti-TBP singals over the membranes



Original uncropped image for anti-TBP signals